

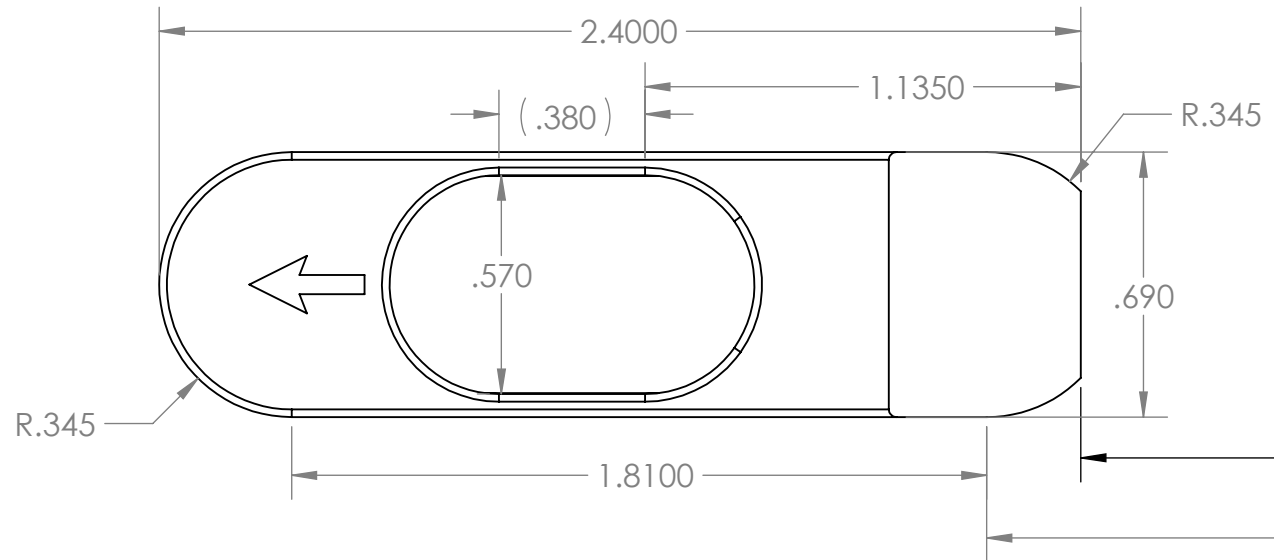
4

3

2

1

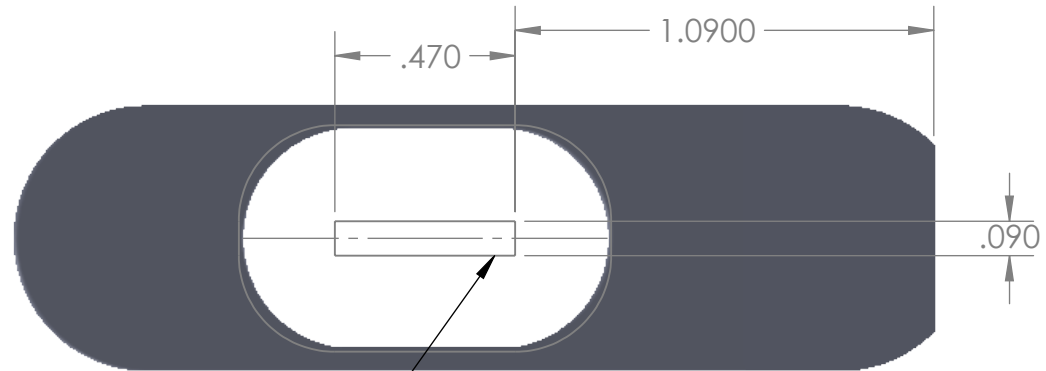
REVISIONS				
ZONE	REV.	DESCRIPTION	DATE	APPROVED



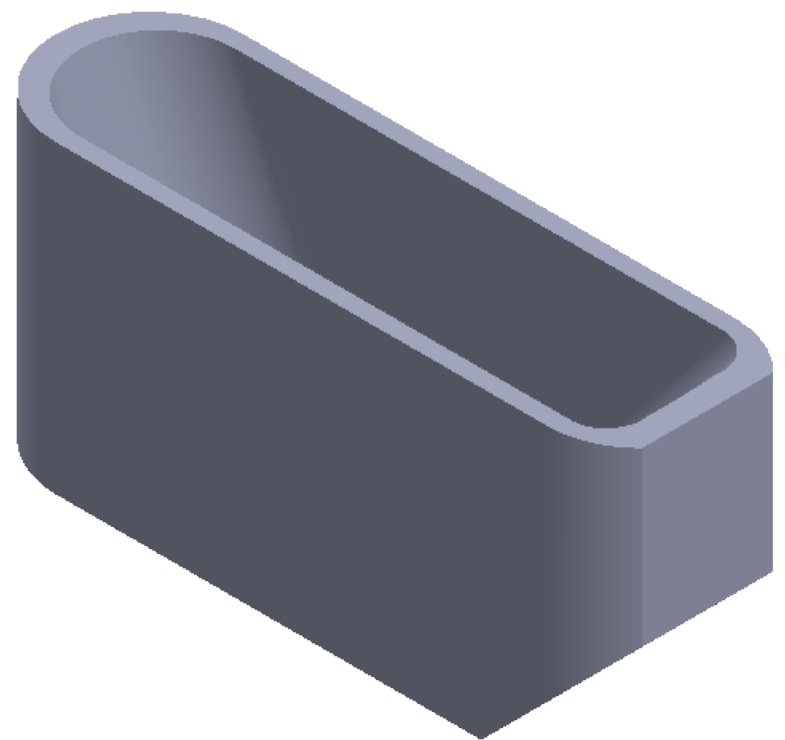
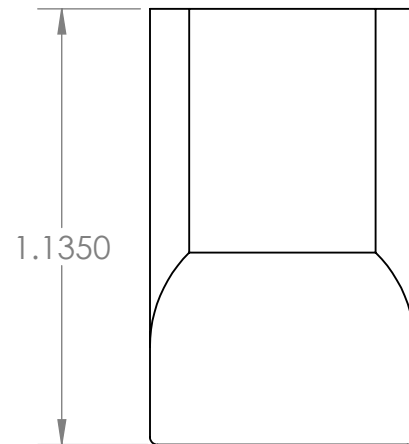
Tang end of action

B

B

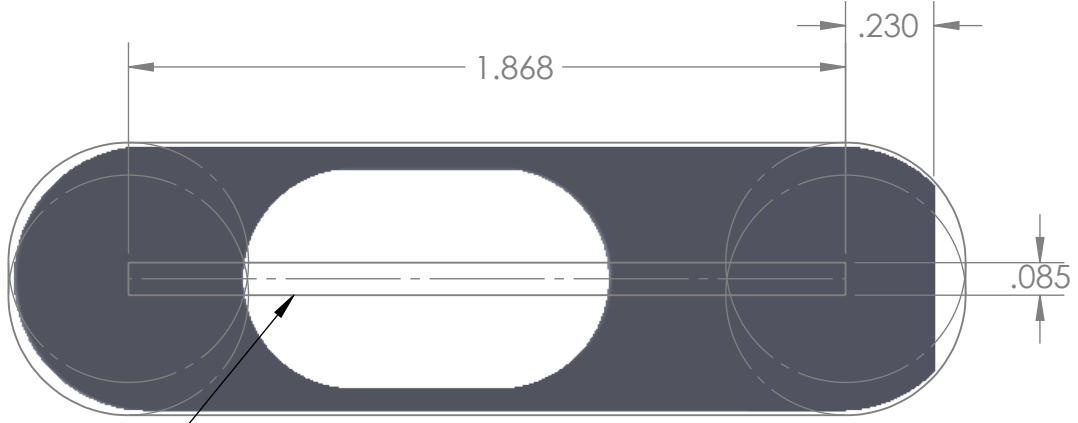


Tool Path for 1/2" Cutter through hole



A

A



Tool Path for 5/8" Cutter



DO NOT SCALE DRAWING

PROPRIETARY AND CONFIDENTIAL
 THE INFORMATION CONTAINED IN THIS DRAWING IS THE SOLE PROPERTY OF BAT MACHINE CO. INC. ANY REPRODUCTION IN PART OR AS A WHOLE WITHOUT THE WRITTEN PERMISSION OF BAT MACHINE CO. INC. IS PROHIBITED.

UNLESS OTHERWISE SPECIFIED:

DIMENSIONS ARE IN INCHES
TOLERANCES:
 ANGULAR: ± .5 DEG
 TWO PLACE DECIMAL ± .010
 THREE PLACE DECIMAL ± .006

THIRD ANGLE PROJECTION

MATERIAL
 FINISH

	NAME	DATE
DRAWN	M. Thom	03/19/2024
CHECKED	D. Thom	03/21/2024
ENG APPR.	XX	XX
MFG APPR.	XX	XX
Q.A.	XX	XX

COMMENTS:

BAT MACHINE CO. INC.

TITLE:
M Short Mag Funnel

SIZE	DWG. NO.	REV
B	Drop-Port-Funnel	A

SCALE: 2:1 WEIGHT: SHEET 2 OF 2

4

3

2

1