

**THIS DRAWING APPLIES TO THE ACTION MODEL.**

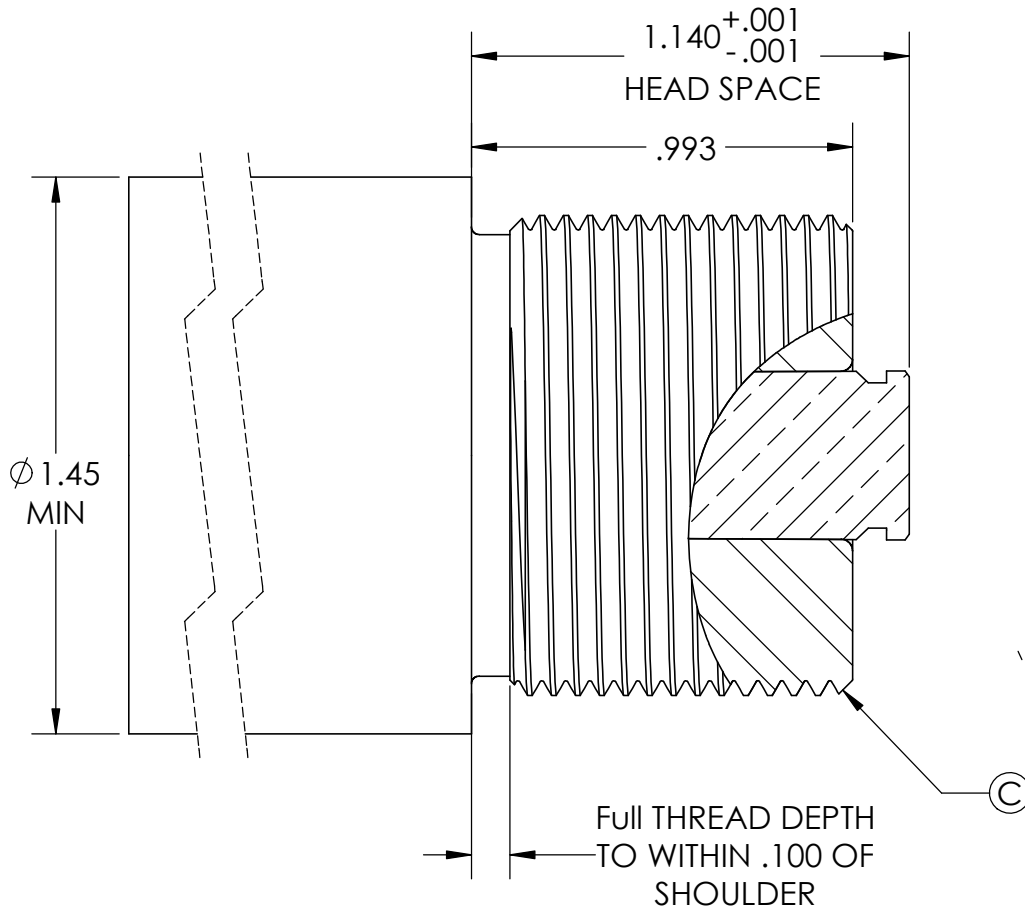
**XL**

**NOTES:**

THREAD SIZE: 1-1/4 X 16  
 THREAD PROFILE: 60° V  
 TPI: 16  
 MAJOR DIA: 1.245  
 PITCH: .0625  
 PITCH DIAMETER: 1.207


REVISIONS

ZONE	REV.	DESCRIPTION	DATE	APPROVED
A1	C	Front thread relief removed.	3/5/2024	D. Thom



**WARNING:**

- BAT Machine Inc. builds custom actions that may or may not match this drawing, and does not accept any liability from the use or misuse of this information. ALL actions should be measured individually.
- The end user is solely responsible for the safe use of the product.

<p><b>PROPRIETARY AND CONFIDENTIAL</b>          THE INFORMATION CONTAINED IN THIS DRAWING IS THE SOLE PROPERTY OF BAT MACHINE CO. INC. ANY REPRODUCTION IN PART OR AS A WHOLE WITHOUT THE WRITTEN PERMISSION OF BAT MACHINE CO. INC. IS PROHIBITED.</p>	<p><b>DIMENSIONS ARE IN INCHES TOLERANCES UNLESS OTHERWISE SPECIFIED:</b>          ANGULAR: ± 1 DEGREE          TWO PLACE DECIMAL ±.005          THREE PLACE DECIMAL ±.001</p>	NAME	DATE	<p><b>BAT Machine Co. Inc.</b></p> <p><b>1-1/4 X 16 Model XL</b></p>
		DRAWN	M. Thom	
	<p>MATERIAL</p> <p>FINISH</p> <p>DO NOT SCALE DRAWING</p>	CHECKED	B. Thom	10/16/2023
		ENG APPR.		
		MFG APPR.		
		Q.A.		
		COMMENTS:		<p>SIZE <b>A</b> DWG. NO. tenon-1250-XL</p> <p>SCALE:2:1 WEIGHT: SHEET 1 OF 1</p>